

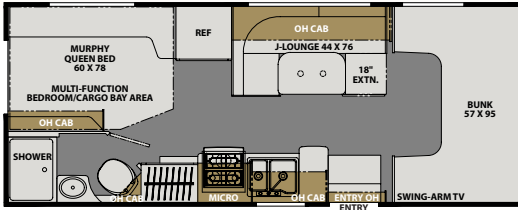


**Coachmen**  
Leader to the Great Outdoors.

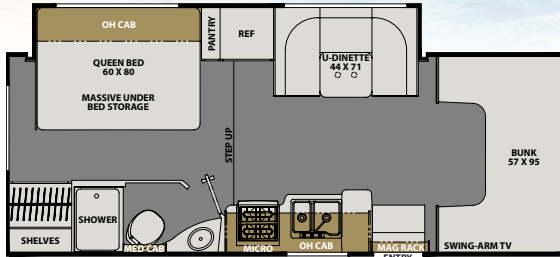
# FREELANDER

By Coachmen

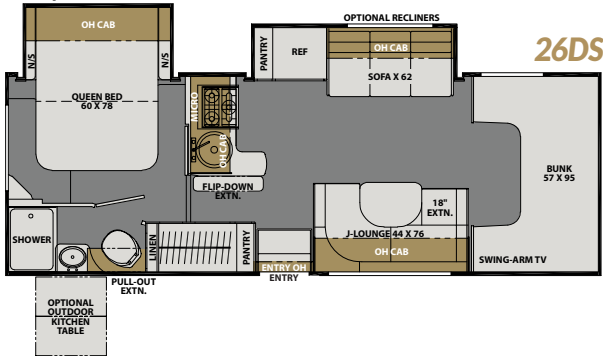
**22XG**



**23FS**

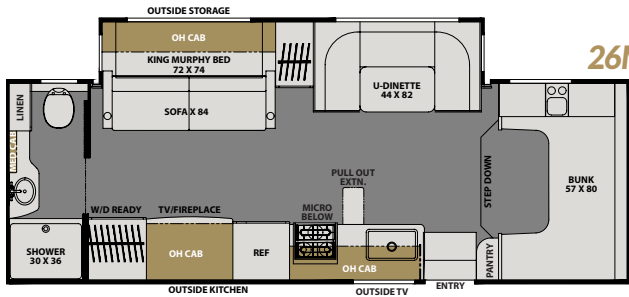


*\* Opt. 2nd A/C*



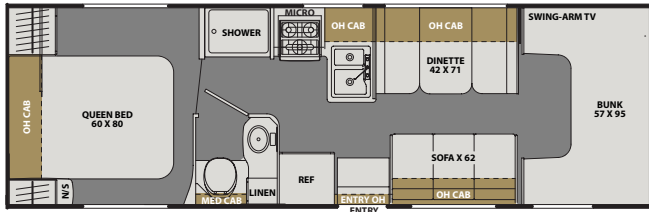
**26DS**

**26MB**

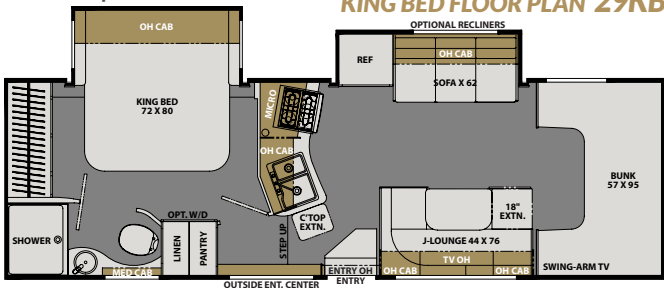


*\* Opt. 2nd A/C*

**KING BED FLOOR PLAN 29KB**

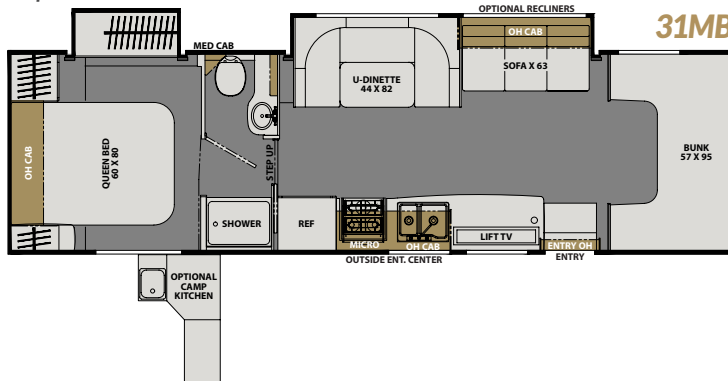


**27QB**



*\* Opt. 2nd A/C*

**31MB**



**Coachmen**  
Recreational Vehicles  
A division of Forest River, Inc.

423 N. Main Street • P.O. Box 30 • Middlebury, IN 46540

To learn more about Coachmen RV and our products and see how Coachmen is making the easy life easier, call us toll free at (800) 353-7383, or visit [www.coachmenrv.com](http://www.coachmenrv.com)

# FREELANDER SPECIFICATIONS

MODEL	22XG	23FS	27QB	26DS	26MB	29KB	31MB
Chassis***	FORD E450/ CHEVY 3500	FORD E450/ CHEVY 3500	FORD E450/ CHEVY 3500	FORD E450	FORD E450	FORD E450	FORD E450
Engine	V8-7.3L/V8-6.6L	V8-7.3L/V8-6.6L	V8-7.3L/V8-6.6L	V8-7.3L	V8-7.3L	V8-7.3L	V8-7.3L
Horse Power	350/401	350/401	350/401	350	350	350	350
Torque	468/464	468/464	468/464	468	468	468	468
Wheel Base	158"	176"	190"	190"	190"	202"	223"
GVWR (lbs.)	14,500/12,300	14,500/12,300	14,500/12,300	14,500	14,500	14,500	14,500
GCWR (lbs.)	22,000/20,000	22,000/20,000	22,000/20,000	22,000	22,000	22,000	22,000
UVW (approx. lbs.)	9,600	10,800	10,294	11,330	11,725	11,800	11,650
CCC (approx. lbs.)	2,800	1,700	2,206	3,170	2,625	2,700	2,850
GAWR Front (lbs.)	5,000	5,000	5,000	5,000	5,000	5,000	5,000
GAWR Rear (lbs.)	8,500	8,500	8,500	9,600	9,600	9,600	9,600
Interior Height	6' 11"	6' 11"	6' 11"	6' 11"	6' 6"	6' 11"	6' 11"
Exterior Width	8' 4"	8' 4"	8' 4"	8' 4"	8' 4"	8' 4"	8' 4"
Exterior Height (with A/C)	10' 11"	10' 11"	10' 11"	10' 11"	10' 11"	10' 11"	10' 11"
Ford Exterior Length (with Bumper)	24' 3"	26' 0"	29' 6"	27' 5"	28' 6"	30' 5"	32' 11"
Tow Capacity (lbs.)	7,500	7,500	7,500	7,500	7,500	7,500	7,500
Fuel Capacity (gal.)	55	55	55	55	55	55	55
LP Capacity (lbs.)	68	68	68	68	68	68	68
Fresh Water Capacity (gal.)	41	43	40	50	49	48	50
Water Heater Capacity (gal.)	TANKLESS	TANKLESS	TANKLESS	TANKLESS	TANKLESS	TANKLESS	TANKLESS
Grey Tank Capacity (gal.)	28	31	31	31	32	34	32
Black Tank Capacity (gal.)	31	31	31	31	32	31	29
Exterior Storage (cu. ft.)	38	40	69	60	60	80	100
Awning Length	15'	17'	20'	18'	19'	21'	21'

## KEY FEATURES

- Residential Queen Beds (60" x 80") & King Size Bed (72" x 80" on 298KB) (N/A on 220XG)
- Large Cab-Over Area with Cup Holders, Storage & USB's (57" x 95" total)
- 15,000 BTU A/C with Heat Pump - Optional Rear 11k BTU A/C (N/A on 220, 230, 270)
- Dual-Swing Door Refrigerator - 12-volt, 10 Cu. Ft.
- CRV SuperSpring Ride - Self-adjusting Rear Helper Spring (N/A on 220XG & 270QB)
- On-Demand Tankless Water Heater & AquaView SHOWERMIFER
- 20% More Fresh Water Capacity on Average Than Competition
- Max-Length Power Patio Awning with LED Light Strip
- AlphaPly Seamless 1-Piece Roof Material (Lifetime Warranty)
- Solar Panel Ports at Sidewall & Roof - Optional 200-watt Panel
- Azdel Composite Sidewall & Cabover Floor Construction

## ESCALADE PACKAGE - OPTIONAL

Heated Mirrors, Dual Batteries, 4G/WiFi Booster, Convection Oven, Kitchen Faucet with Spray Head, Child Safety Net in Cabover, Cab Over and Bedroom Power Vent Fan with Maxxair Cover, Upgraded Running Boards, Leatherette Cockpit Seat Covers, Side View Cameras

**GVWR (Gross Vehicle Weight Rating)** is the maximum permissible weight of the unit when fully loaded. It includes all weights, inclusive of all fluids, occupants, cargo, optional equipment and accessories. For safety and product performance do NOT exceed the GVWR.

**GCWR (Gross Combined Weight Rating)** is the maximum permissible loaded weight of your motor home and any towed trailer or towed vehicle. Actual GCWR of this vehicle may be limited by the sum of the GVWR and the installed hitch receiver maximum capacity rating; see hitch rating label for detail.

**GAWR (Gross Axle Weight Rating)** is the maximum permissible weight, including cargo, fluids, optional equipment and accessories that can be safely supported by each axle.

**UVW (Unloaded Vehicle Weight)\*** is the typical weight of the unit as manufactured at the factory. It includes all weight at the unit's axle(s), including full fuel, all fluids and LP Gas. The UVW does not include cargo, fresh potable water, additional optional equipment or dealer installed accessories.

\*Estimated Average based on standard build optional equipment.

**CCC (Cargo Carrying Capacity)\*\*** is the amount of weight available for fresh potable water, cargo, passengers, additional optional equipment and accessories. CCC is equal to GVWR minus UVW. Available CCC should accommodate fresh potable water (8.3 lbs per gallon). Before filling the fresh water tank, empty the black and gray tanks to provide for more cargo capacity.

\*\* Estimated average based on standard build optional equipment

Each Coachmen motorhome is weighed at the manufacturing facility prior to shipping. A label identifying the unloaded vehicle weight of the actual unit and the cargo carrying capacity is applied to every Coachmen motorhome prior to leaving our facilities.

The load capacity of your unit is designated by weight, not by volume, so you cannot necessarily use all available space when loading your unit.

Actual towing capacity is dependent upon your particular loading and towing circumstances, which includes the GVWR, GAWR and GCWR as well as adequate trailer brakes. Please refer to the Operator's Manual of your vehicle for further towing information.



Learn More  
Scan this barcode using a QR Reader on your smart phone to learn more about Forest River.



## CUSTOMER SATISFACTION



All information contained in this brochure is believed to be accurate at the time of publication. However, during the model year, it may be necessary to make revisions and Coachmen reserves the right to make all such changes without notice, including prices, colors, materials, equipment and specifications as well as the addition of new models and the discontinuance of models shown in this brochure. Therefore, please consult with your Coachmen dealer and confirm the existence of any materials, design or specifications that are material to your purchase decision. 9/23